

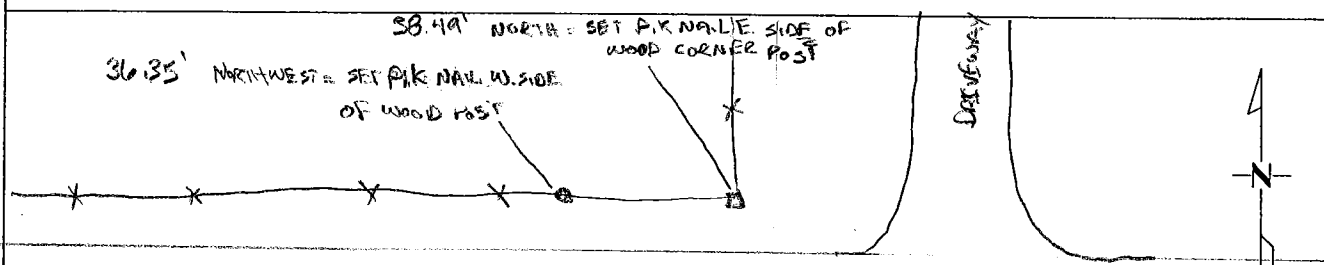
# CERTIFICATE OF LOCATION OF GOVERNMENT CORNER

NORTH QUARTER Corner of Section 32, Township 107 N, Range 43 W

50<sup>th</sup> Principal Meridian, State of Minnesota, County of MURRAY

At the corner location shown on the sketch:

- On 9/21/07 found a 1/2 OPEN DOWN 11' BELOW SURFACE IN CENTERLINE ROAD IN LINE WITH FENCE LINE SOUTH
- left monument as found     lowered monument     removed monument (explain)
- On \_\_\_\_\_ placed a \_\_\_\_\_



13<sup>TH</sup> ST

21.83' SOUTH = SET 3/8 REBAR DOWN 0.3' BELOW SURFACE

Statement of evidence for this corner location is on back of this page.

I hereby certify that this document was researched and prepared by me or under my direct supervision and that I am a licensed Land Surveyor under the laws of the State of Minnesota.

Signature [Signature] Date 10/22/07 License No. 40853  
 Title:  Land Surveyor     Professional Engineer     County Surveyor     County Engineer